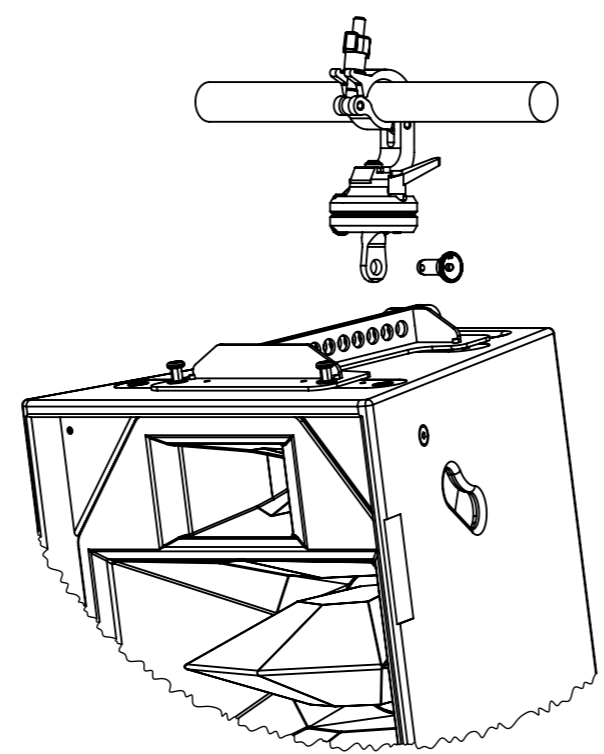


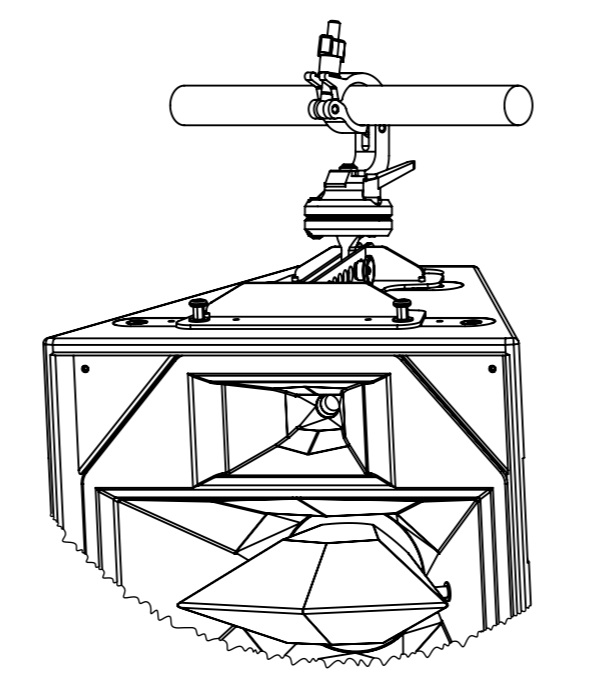
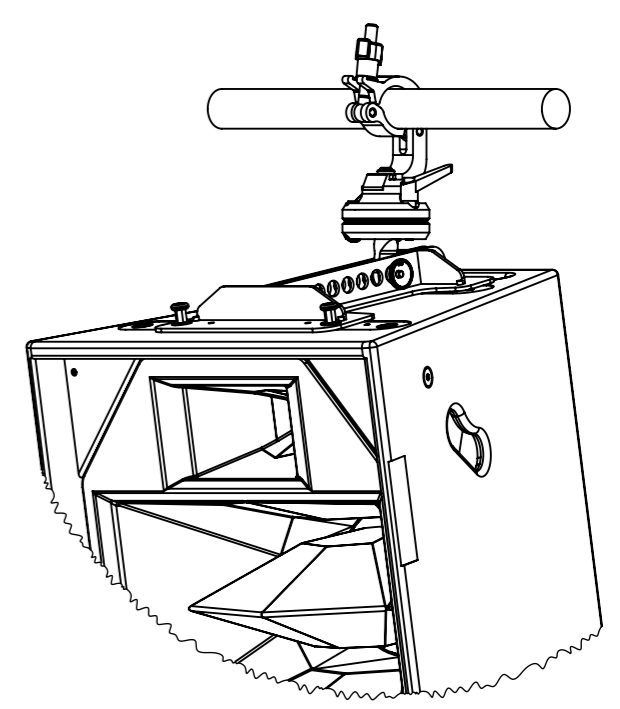
STC-200-BFP
Swivel Truss Clamp for use with the Evo 2 Butterfly plate to enable quick, safe deployment of Evo 2 arrays on truss with adjustable horizontal aim.



Attach the STC's Trigger clamp to the truss in the desired position. Remove the push pin. Ensure the locking lever is in the open position so the swivel eye can move freely.

Lower the truss and insert the swivel eye into the butterfly fly plate, aligning with the correct hole for the desired tilt.

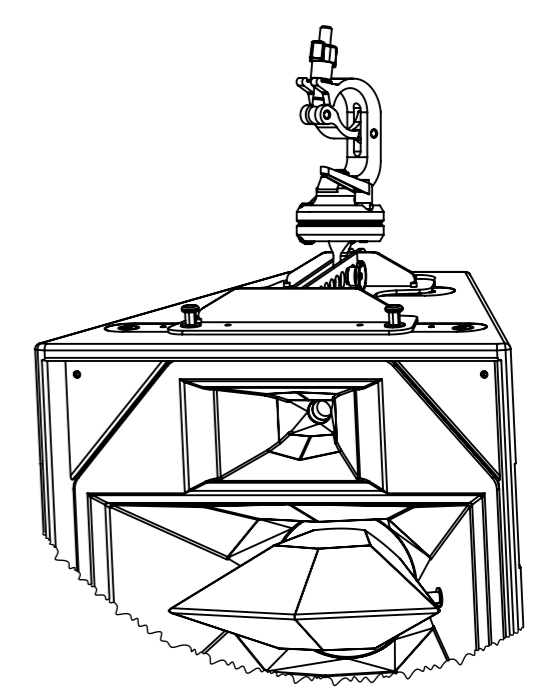
Insert the push pin all the way through the butterfly plate and the swivel eye before lifting the Evo 2 or Evo 2 array.



Leave the STC locking lever open until the Evo 2 or Evo 2 array has been lifted.

Set the pan angle, then let the array hang freely before closing the locking lever to fix the position.

Only a light force is required on the lever. Only attempt to adjust the pan with locking lever open.

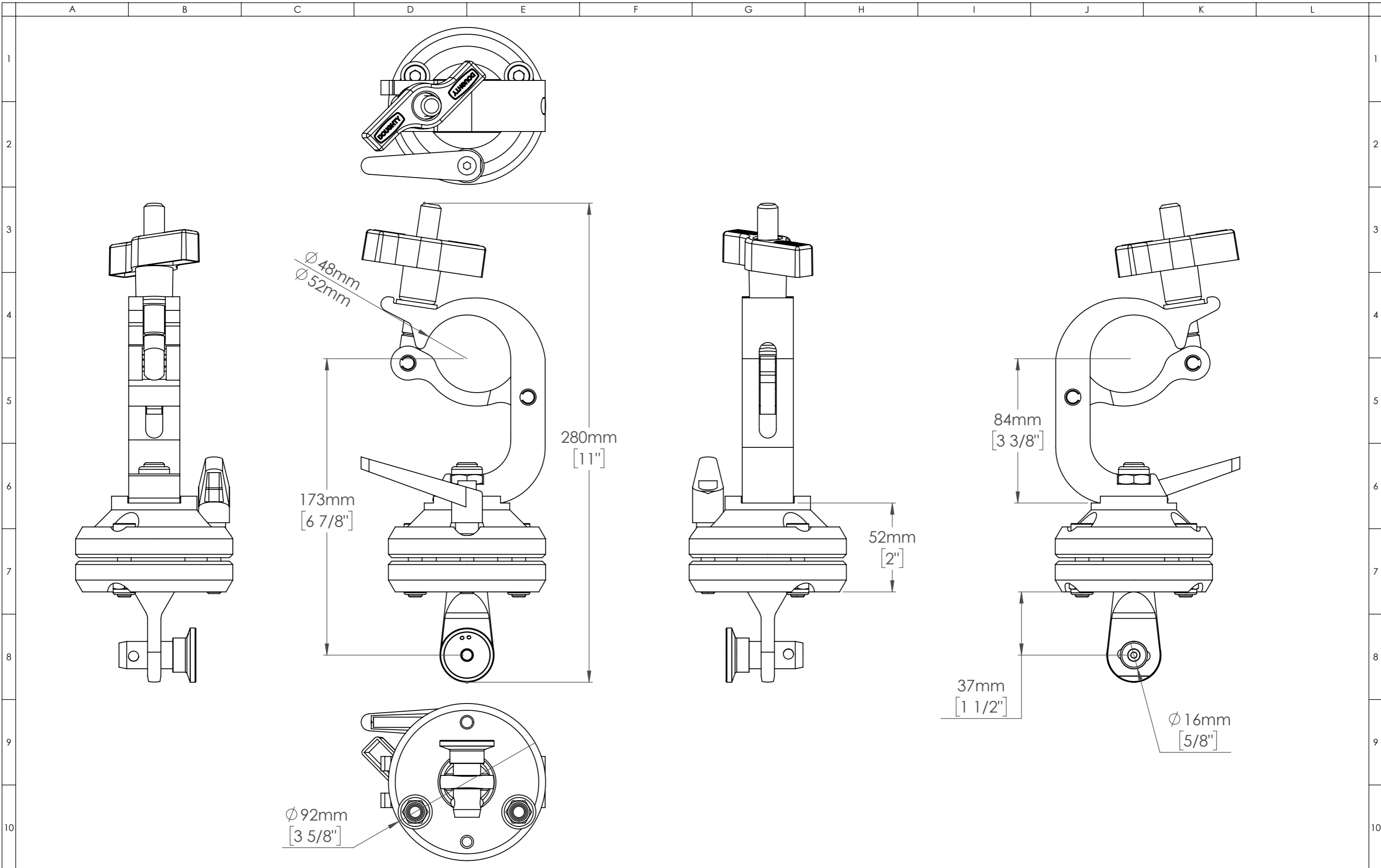


Funktion-One Research LTD
Hoyle, Beare Green, Dorking, Surrey, RH5 4PS, UK
mail@funktion-one.com +44 (0)1306 712820

Sheet: Detail Drawing
Funktion-One Accessory Drawing

A3 Sheet Scale: 1:2
Filename:

Drawn By: Mike Igglesden 25/11/2025
STC-200-BFP-F1-AD=T0319-00



Funktion-One Research LTD
 Hoyle, Beare Green, Dorking, Surrey, RH5 4PS, UK
 mail@funktion-one.com +44 (0)1306 712820

Sheet: Technical Drawing
 Funktion-One Accessory Drawing

A3 Sheet Scale: 1:2

Drawn By: Mike Igglesden

25/11/2025

Filename:

STC-200-BFP-F1-AD=T0319-00

